

The Newsletter of the Tambopata Reserve Society

TReeS AGM - will now be held in early November, in London or Canterbury. Full details will be given in the October newsletter.

EMERGENCY FUNDING APPEAL IN DEFENCE OF THE ISOLATED INDIGENOUS POPULATIONS OF MADRE DE DIOS, PERU

Several isolated indigenous populations are immediately threatened by the expansion of uncontrolled, illegal mahogany extraction that is encroaching into their traditional territory. In May 2002, the Peruvian government declared a State Reserve in favour of the isolated indigenous populations; however, there appears to be no adequate plan to give on-the-ground protection to the new Reserve and control illegal logging.

The urgency of the situation cannot be overemphasised. There is an immediate danger of direct confrontation, which could result in deaths among both the indigenous peoples and the timber workers. Even without a direct confrontation there is an acute risk of epidemics through the introduction of 'western' diseases, to which isolated indigenous populations have little resistance. This year's logging season is just beginning and unless action is taken it is highly likely that contact will be forced upon the isolated populations, with disastrous results. Already, there have been reports of some sightings by loggers of isolated indigenous people, including a case in which a young timber worker was wounded by an arrow.

A proposal has been prepared jointly by the regional indigenous Federation, FENAMAD, and TReeS-Peru/TReeS-UK, along with several other local NGO's. It adopts a dual strategy. Its primary aim is to work to prevent contact with the isolated populations, guaranteeing their right to maintain their isolation and retain use of their traditional territories. In addition, it aims to put in place a contingency plan for emergency assistance, should contact occur. To this end the following objectives will be pursued:

- Mount an awareness-raising campaign in Peru and mobilise support for the defence of the new Reserve;
- Establish an investigation team to visit the logging frontier and gather accurate information on the situation;
- Develop a cross-institutional contingency plan for emergency assistance in the event of epidemics as a result of direct contact.

Whilst it is likely that the total funding will take some months to raise, TReeS UK has undertaken to raise an initial sum of US\$10,000 so that some activities can begin as soon as possible. We are therefore urgently seeking significant donations to contribute to this sum.

We would ask TReeS members to ask any individuals or organisations who may be able to make a significant donation or publicise this matter to contact TReeS to obtain the full proposal.

FUNDING APPEAL

TReeS has received many small-scale requests for funding this year from worthy projects which have stretched our funding reserves. TReeS remains one of the few conservation organisations in the Tambopata area that can respond quickly to such requests.

This is due, principally, to the generosity of you – the TReeS members. And, once again, we would urge you to offer support to at least one of the following –

The Ese Eja Ethnocultural Centre

The Ese Eja Ethnocultural Centre (formerly Centro Nape) is expecting to continue to receive approximately 200 tourists per month this year. Helen Newing and another TReeS member have both recently toured the Centre and felt that visitors were having an interesting, informative and well conducted experience.

The Centre is planning to further develop their handicraft activities this year, the sale of which to visitors would raise some further income. The team have started to create an Ese Eja chacra on site so that tourists can learn about the traditional methods and plants cultivated by the Ese Eja.

It has now been agreed by the community that all the income received by the Centre from visitors should go to the Centre to meet salary, running and upkeep costs rather than a proportion going to the community. TReeS no longer needs to contribute to regular running costs, and instead we have offered to raise funds for specific needs to expand the activities at the Centre.

* **Current funding needs:** \$600 (£400) is sought for equipment purchases, including distillation equipment, and infra-structure repairs to the Centre during 2002.

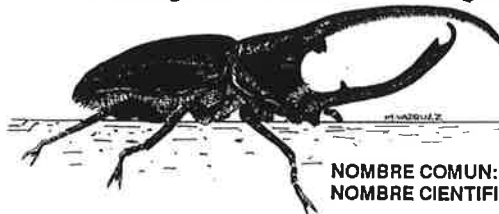
Guadua (Bamboo) Workshop Project

A 12 day workshop is planned in P.Maldonado to teach basic bamboo biology and harvest management, preservation and construction methods. The participants, carpenters and builders as well as forestry students and NGO staff, will be invited from Madre de Dios and Acre, in Brazil.

Bamboo is abundant in the area, has a great variety of uses, can be managed and harvested sustainably and has huge untapped economic potential. No costly tools are needed to harvest and work bamboo.

It is hoped that the Workshop, which will involve the construction of a bamboo house, will have an immediate impact on local construction methods. In the longer-term, its use it may offer people alternatives to logging and gold-mining.

* **Funding :** £250 contribution is sought from TReeS.



NOMBRE COMUN: Catzo gigante
NOMBRE CIENTIFICO: *Dynastes hercules*

Orchid Project

\$500 was received after the appeal in our last Newsletter for this Peruvian student project entitled – ‘Taxonomic study and population analysis of the Orchidaceae and Araceae families’. Cuzco Amazonico lodge (where Stephen Fry stayed on his recent visit) is providing board & lodging. A summary of the proposal is available (in English) – please send a sae, if required.

* **Funding:** £50+ donations requested. TReeS members with Gardening Society connections might like to draw this project to the attention of those interested in orchids.

English Language Scholarships

One of the three students supported by TReeS, has now progressed from basic to intermediate level. They are studying at the language school run by Tina Smith in P.Maldonado. Improved language skills will assist their long-term work prospects in tourism in the area.

* **New sponsorship** is sought (2+ students are awaiting funding) - £140 for a 6 month course or £25 / month.

Eco-tourism monitoring

Chris Kirkby is undertaking a 3 month study looking at waste management, trail use, lake visits, etc at lodges along the Tambopata river within the Tambopata National Reserve with the aim of establishing ‘eco-tourism’ standards which will be enforced by INRENA.

* **New sponsorship** is still sought to cover the cost of a radio program to broadcast the results to the public - £150.

Peruvian student biologist support

The research activities of San Antonio de Abad University, Cuzco, and San Marcos University, Lima, in the Tambopata area are increasing. TReeS is hoping to provide some small-scale grants that will contribute to transport and research costs during the 6 month study period. Lodges offer subsidised board and lodging.

* **New sponsorship** is sought - £300 per student.

TReeS House in P.Maldonado

Various improvements have been made to the house over recent months. The facilities are in constant use by staff of other conservation organisations, students, researchers and small local lodge operators without their own facilities.

* **Sponsorship** contributions are sought to cover the monthly running costs - £75/month.

TReeS will contact the donors to discuss the re-allocation of funds to the most urgent needs if donations are received in excess of the amounts needed for any one of the above.

Project La Torre News

Elizabeth Raine & Nicole Antonie, 2 ex-RN’s at the EI, are continuing with their community project in the La Torre community (LTC) – just upriver from Explorer’s Inn. They are trying to ensure that the community will benefit in the long-term from all the tourism activity in the area as well as raising issues of conservation education and improving the nutrition and hygiene levels in the community. Their initial activities include –

Extra Curricula School Activities

For example, at the end of April there was a 2 week course for all teachers which the LTC teacher had to attend. ER and NA taught various extra curricular activities, such as local rainforest ecology, certain aspects of Peruvian history, some wider studies such as learning about Africa.

LTC English School

There are 7 adult students, classes are held three times a week for a 2-hour period. Each student has been loaned a text book, which remains the property of the English School. English classes for children are held three times a week in the afternoon following school for one hour. The mothers of LTC are taking it in turns to come to the school to cook a little lunch to keep the kids energy levels up.

Mother’s Day

A huge fiesta in Peru, the Project prepared a play for the day based upon a book called “The Great Kapok Tree”. The children dressed as animals from the jungle and native children to express the value of the forest to all concerned. The play was held after two serious inter-community football matches, where LTC drew with the champions Baltimore. Then all of the men of LTC cooked a huge feast for the women who had come from neighbouring communities. After the play (which everyone loved!), all party-goers danced until the small hours of the morning in the community hall and football field. Money to buy the food for all was donated by LTC and EI guides.

Project La Torre is affiliated to TReeS and ANIA (Asociacion para ninos y su ambiente). The Project has secured an initial grant of \$7,000 from a UK donor and are looking for more individual supporters.

More about the Project can be found on the TReeS website and projectlаторre@yahoo.co.uk

Giant Otter conservation project

*** New team in Puerto Maldonado -**

The Frankfurt Zoological Society Giant Otter Project is now represented by two new people in P.Maldonado on a full-time basis. Raphael Notin, former RN at Explorer’s Inn, TReeS member, and responsible for initiating a giant otter monitoring and tourism management plan on Lake Cocococha, will carry out the monitoring of local giant otter populations and the implementation of lake management plans in the Tambopata region. Sandra Felipa, a long-term TReeS collaborator, with experience in media communication, will be responsible for a new environmental education programme in Lake Sandoval which will not only co-ordinate school visits, but will also provide tourists with a new, informed insight into the area.

*** Creation of national giant otter database underway -**

Together with the Centro de Datos para la Conservacion (Centre for Conservation Data – CDC) of the La Molina Agrarian University, the Frankfurt Zoological Society Giant Otter Project has started a GIS database and mapping initiative, in order to gather all available giant otter data for Peru and create the first accurate national distribution map for the species. Biologist Sandra Isola will be in charge of this work. So far, all the information for Madre de Dios has been gathered and processed. For this, a standard giant otter data processing form has been created, and linked to Arc View mapping software. It is hoped that the database will be a useful tool for future management decisions concerning the species in Peru, allowing easy access to consistent, clear, temporal and spatial giant otter data.

Further details from - fzsgop@terra.com.pe



Curl Crested Aracari
by Eustace Barnes
(new T-shirt design)

Notes from Picaflor Research Centre

In **January** a yellow crowned parrot became a new resident at Picaflor. 'Lorita' arrived via the La Torre park guards. Her wing feathers had been severely clipped and, as a result, she is likely to be a long term resident at Picaflor as her rehabilitation will pose problems - the feathers will eventually grow back, but she needs to work on her conspecific interactions....sitting on the roof, wolf whistling and shouting 'hola' to passing parrots is unlikely to make a good impression.

In **February** we had volunteers out on the trails, in the rain, putting in a trial run of marker posts at 50m intervals. Within 24 hours, most posts had become the foundation stones for termite nests, and we now have perfectly symmetrical termite nests at 50m intervals along the trails. We're starting a new trial with plastic markers.

At last, in **March** the rain eased off and the trails dried off just enough to give excellent conditions for observing mammal tracks, with jaguar tracks once again present on the Picaflor main trail and on the 'quebrada' trail not far from the buildings.

In **April**, the 'pijuayus' by the house started fruiting, and an initial visiting flock of 15 chestnut-fronted macaws increased to over 40 in a few days and their noisy feeding became a predictable early morning and late afternoon event for the entire month. Papayas around the buildings attracted crested and olive oropendolas as well as the usual russet-backed oropendolas and violaceous jays, and the frequent addition of red-throated caracaras made the overall effect deafening. Perhaps drawn by the commotion, a large male tayra started showing a daily interest in the papayas at this time, boldly approaching within a few metres of observers to claim the prized fruit by effortlessly climbing each papaya tree in turn to check the progress of ripening. We managed to salvage a bit of fruit for ourselves, too!

- * January temp. range: 21-32.5 C 20 days of rain
- * February temp. range: 22-31 C 22 days of rain
- * March temp. range: 22-30.5 C 14 days of rain
- * April temp. range: 20-31 C 12 days of rain

Laurel Hanna www.picaflor.org

Las Piedras Expedition

The Edinburgh University expedition up the Las Piedras river - the first scientific expedition of its type to venture up this 500kms long river - is now in the field.

Their progress can be observed via their website - www.savemonkeys.org

Further details about the Las Piedras river can be found at: www.biosphere-expeditions.org This is the website of Biosphere Expeditions who have just completed another month of field work with some great sightings and

New territorial Reserves created in Madre de Dios

After over 6 years of lobbying by FENAMAD the government has officially established the 'Amarakaeri Communal Reserve' in south-west Madre de Dios and the 'Yora, Yine and Amahuaca territorial Reserve' in the north-west. The TReeS representative - Alfredo Garcia - has spent several years working on the former.

Central Peruvian Amazon Project

Two recent Cambridge University anthropology graduates have become heavily involved with the indigenous rights of the Nahua people (at their invitation). The Nahua live to the north of Manu and their lands are also coming under increasing threat from loggers. Details of their work can be found at: <http://www.serjali.org/en/>

Peru Trades Debt For Forest Conservation

A portion of Peru's debt to the USA will be cancelled in return for the Peruvian government's commitment to conserve and maintain wildlife reserves and other protected forest areas.

Under the agreement, Conservation International, The Nature Conservancy, and World Wildlife Fund will contribute \$1.1 million and the USA will provide \$5.5 million to cancel a portion of Peru's debt to the USA.

In return, the government of Peru will issue local currency obligations in which the payment streams will go to fund tropical forest conservation activities through local NGO's in Peru.

As a result of the agreement, Peru will save over \$14 million in debt payments over the next 16 years. Peru will provide the local currency equivalent of \$10.6 million toward conservation activities over the next 12 years. For every \$1 in U.S. funds, almost \$2 will be spent on conservation activities in Peru.

The debt for nature agreement derives its authority from the Tropical Forest Conservation Act (TFCA). Peru is the fifth country to benefit from programs under the TFCA - Bangladesh, Belize, El Salvador, and Thailand are the others. More details can be found at:

<http://www.pachamama.org/updates/new-moon-2002-apr.htm#workshop>

Peru News

Wide spread, violent protests have occurred during June in many southern towns and cities leading to at least 2 deaths, hundreds of injuries and the imposition of a curfew. Arequipa airport was badly damaged and all roads in and out of the city were closed off. They have been in response to governments plans for privatisations of electricity companies. Despite IMF and other financial arrangements requiring such policies, the government has, for the moment backed down.

ExPresident Belaunde Terry, President in 1963 and 1980-1985 died in June.

Twelve military officers have been arrested while investigations are undertaken in to longstanding rumours that many of the MRTA members killed at the end of the Japanese Embassy siege in 1997 had already surrendered.

World coffee prices have hit a 30 year low (\$0.45/kg) leading to 25-40,000 hectares of coffee plantations across Peru being abandoned. Coca leaf prices, however, are on the rise from \$0.40/kg in 1998 to \$3+/kg now.

The latest national statistics show that 54.8% of the population (14.6 million people) are officially considered to be living in poverty up from 48.4% in 2000, and those in extreme poverty up from 15% to 24.4%. When President Fujimori came to power it was on a slogan of 'halving' poverty during his term in office ! However, the latest economic growth figures (4.1% for 2002) are the highest in S.America.

Photographic Project

Rebecca Warren spent much of last year as a volunteer in the TReeS Peru office under the VSO – OTP scheme. She undertook a small photo project while she was there in which she gave local people cameras to record their daily lives. Some of the photos they took can now be seen at - <http://boas.ukc.ac.uk/Antthropologists/raw4>

TReeS UK Libraries

Forthcoming deposits will include –

- Project La Torre newsletter no.1;
- FENAMAD XII Congress report;
- Giant Otter sightings log, from EI, 1984-2000;
- Ese'Eja Cultural Centre report;
- Orchid research project proposal;
- Giant Otter Project newsletter no.4.

Tambopata on BBC Radio 4

On 1st July at 9pm some TReeS members may have heard Radio 4 broadcast a programme about the 'Search for the chicken eating tarantula !'. It included an interview with Chris Kirkby and visited several sites along the Tambopata river. Needless to say, though some very large Tarantula's were observed a definitive sighting of the 'chicken-eating Tarantula' was not made.

Newsletter sponsorship: we are very pleased that our 50th Newsletter has been sponsored by the hugely popular and internationally acclaimed 'Eden Project'.

The Eden Project

The Living Theatre of Plants and Animals

- a dynamic educational experience for adults and children -

If you are visiting Cornwall then you must visit the fantastic Humid Tropics and Warm Temperate Biomes, plus the extensive Outdoor Landscape at this internationally recognised award winning project.

Open 10am-6pm until 27.10.2002
(Shorter opening times apply in the winter months)

The Eden Project, Bodelva, St.Austell,
Cornwall PL24 2SG

www.edenproject.co.uk

TReeS Merchandise

* **NEW - Frogs of Tambopata CD:** a CD of frog calls identifying 70 frog species found in the Tambopata area, produced by the Macaulay Library of Natural Sounds & Cornell Laboratory of Ornithology. Price: £12.50

* **NEW - Curl Crested Aracari T-shirt** based on a colour painting by rainforest artist Eustace Barnes. Price: £9 (XL), £8.50 (L) bleached and unbleached.

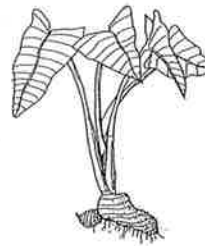
* **Toothbrushes** - 4 for £5. Adult or Junior. All Soft.

* **Rainforest Animal greetings cards** (blank inside) by L.Hanna - 7 beautiful designs featuring an Ocelot, Tree-frog, Scarlet Macaw, Razor-billed Curassow, Puma, Saddleback Tamarin and Black Caiman. Price (including envelopes): £5.00 (set of 7).

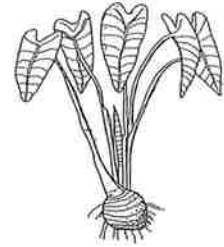
* **Girl of the Rainforest:** a creative CD of Andean music and new poems set to Andean music by Sophia Buchuck & friends; full details are given on the inlay card. 10 tracks; lasts nearly 40 minutes. Price: £9 (£4 to TReeS).

Full Merchandise List – please send a sae. All prices include postage and packing: allow 3+ weeks for delivery.

TReeS – P.O.Box 33153, London NW3 4DR.



PAPAHUALUSA (Colocasia esculenta)



UNGUCHA (Xanthosoma : glit'illan)

Demographic Indicators	Urban	87.32 %	Population living in poverty 1997
Estimated population 2001	Rural	40.73 %	Extreme poverty 14.7%
Total 26.35 million	Population with access to sewerage services within the home (2000)		Poverty 36.0 %
Urban pop. 19 million	Total	58.68 %	Total 50.7 %
Rural pop. 7.34 million	Urban	78.89 %	The bottom 20 % population represent 6 % of the economy (2000).
Life expectancy at birth 1999	Rural	12.22 %	The top 20 % of the population represent 57.5 % of the economy (2000).
Total 68.8	Socioeconomic Indicators		Health Risks Indicators
Male 66.3	Gross domestic product per capita (2000)		Infant mortality (per 1,000 live births) 1995-2000
Female 71.3	Current value US\$ 2,091		42.1
Illiteracy rate in population over 15 years (2000)	Constant US\$ US\$ 2,157		Maternal mortality (per 1,000 live births) 1991-1998 average
Total 7.2 %	Growth rates		261.0
Male 3.3 %	1997	6.7 %	Average number of children 1995-2000
Female 10.8 %	1998	-0.5 %	3.0
Rural Sierra	1999	0.9 %	
Male 8 %	2000	3.1 %	
Female 25.5 %	Population living in poverty 2000		
Jungle	Extreme poverty	14.8 %	
Male 9.2 %	Poverty	39.3 %	
Female 21.3 %	Total	54.1 %	
Population with access to services of drinking water inside the home (2000)			<i>Figures from "Cuánto: Perú en Numeros 2001 anuario estadístico"</i>
Total 71.44 %			

The Tambopata Reserve Society P.O.Box 33153, London NW3 4DR

Patron - Norman Myers

The work of TReeS has been endorsed / supported by the Rainforest Alliance, IUCN, IWGIA, Helpage, Oxfam, the Anglo-Peruvian Society, Body Shop International PLC, Earthlove Fund, Reuters Foundation, the Yew Tree Gallery, the Lindeth C.T., etc.

Registered Charity No. 298054